

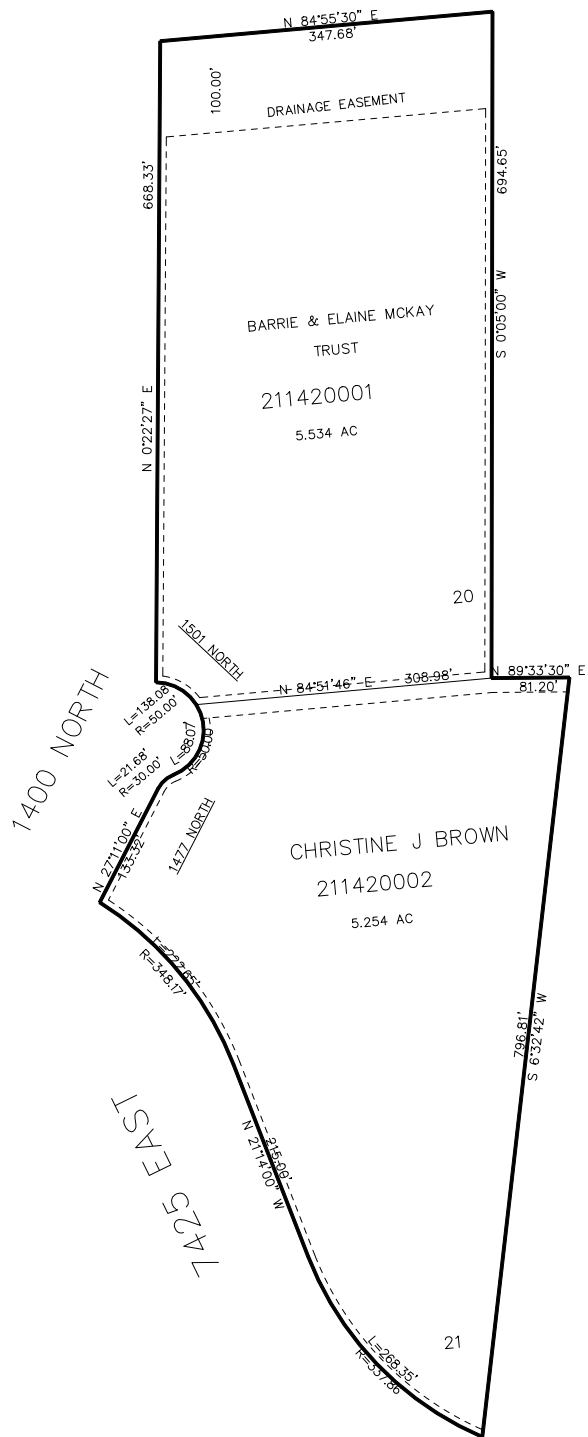
PART OF THE W 1/4, OF SECTION 6, T.6N., R.2E., S.L.B. & M.
MIDDLE FORK RANCHES FIRST AMD

142

TAXING UNIT: 520

IN WEBER COUNTY
SCALE 1" = 200'

SEE PAGE 48



SEE PAGE 48

SEE PAGE 48

SEE PAGE 48

FOR COMPLETE ENG DATA SEE
ORIGINAL DEDICATION PLAT IN
BOOK 79, PAGE 12 OF RECORDS.